

# CHELAN COUNTY

## MONTHLY FINANCIAL REPORT

# JULY 2012



## HIGHLIGHTS:

General Fund summary, projected and actual:

	Projected Year-to-Date	Actual Year-to-Date
Revenue	18,451,766	20,128,380
Expenditures	17,810,872	17,865,956
Net Income (Deficit)	640,894	2,262,424
Beginning Fund Balance	1,600,000	2,231,455
Current Fund Balance	2,240,894	4,493,879
<b>Ending Cash Balance</b>		<b>6,101,219</b>

*The above projected numbers do not include emergency appropriations or unbudgeted revenue. Expenditures, revenues, and fund balances in this report are compiled on the modified accrual basis.*



Prepared by:  
**Brad Posenjak, CPA**  
 Chief Deputy Auditor  
 (509) 667-6655  
[brad.posenjak@co.chelan.wa.us](mailto:brad.posenjak@co.chelan.wa.us)

Previous monthly financial reports are available at [http://www.co.chelan.wa.us/ad/accounting/county\\_budget.htm](http://www.co.chelan.wa.us/ad/accounting/county_budget.htm)

# GENERAL FUND - BY CATEGORY

Through July 31, 2012

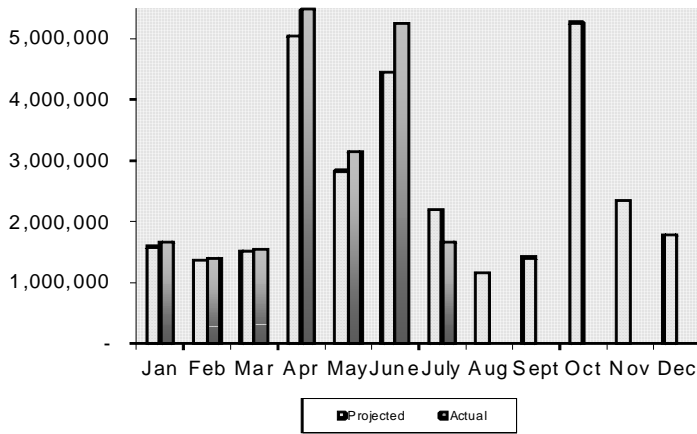
REVENUE	Month-To-Date			Year-To-Date		
	Projected	Actual	Variance	Projected	Actual	Variance
Property Tax	50,262	60,169	9,907	5,857,536	5,990,768	133,232
Sales Tax	398,701	406,395	7,694	2,576,899	2,754,194	177,295
Prop. Tax Penalty & Interest	41,606	52,316	10,711	466,635	803,970	337,335
Building and Planning Fees	93,401	115,284	21,883	529,982	633,761	103,779
PILT	0	0	0	2,175,200	2,313,538	138,338
PUD Priviledge Tax	0	0	0	975,000	1,368,421	393,421
Liquor X & P	12,544	16,240	3,695	88,338	121,985	33,647
Wenatchee Court	13,107	20,266	7,158	95,606	138,893	43,287
Law Enforcement Contracts	49,731	23,348	<b>(26,384)</b>	1,243,286	1,172,222	<b>(71,063)</b>
Recording Fees	12,338	13,239	901	80,525	85,969	5,443
Motor Vehicle Licensing	46,189	43,453	<b>(2,736)</b>	250,340	248,720	<b>(1,620)</b>
Probation Services	24,670	20,831	<b>(3,839)</b>	151,692	136,835	<b>(14,857)</b>
Interfund Payments	210,080	206,665	<b>(3,415)</b>	851,314	896,162	44,847
Court Fines	83,092	73,612	<b>(9,480)</b>	489,533	447,117	<b>(42,416)</b>
Treasury Interest	28,625	17,458	<b>(11,166)</b>	100,937	91,898	<b>(9,039)</b>
Grants\Entitlements	343,485	355,486	12,002	1,342,170	1,408,003	65,833
Other *	260,033	242,586	<b>(17,447)</b>	1,176,774	1,515,925	339,152
<b>TOTAL</b>	<b>1,667,862</b>	<b>1,667,346</b>	<b>(517)</b>	<b>18,451,766</b>	<b>20,128,380</b>	<b>1,676,614</b>

EXPENDITURES	Month-To-Date			Year-To-Date		
	Projected	Actual	Variance	Projected	Actual	Variance
10 - Salaries & Wages	1,205,825	1,194,260	(11,565)	8,299,202	8,204,819	(94,383)
20 - Personnel Benefits	475,506	460,274	(15,232)	3,293,496	3,179,018	(114,478)
30 - Supplies	42,299	52,064	<b>9,765</b>	286,382	378,972	<b>92,590</b>
40 - Other Services/Charges	467,402	486,383	<b>18,981</b>	2,837,474	2,982,457	<b>144,984</b>
50 - Intergovernmental Svcs	20,800	25,924	<b>5,124</b>	219,813	247,291	<b>27,479</b>
90 - Interfund Payments	443,061	638,934	<b>195,873</b>	2,874,505	2,873,398	(1,107)
00 - Reclassifications	0	0	0	0	0	0
<b>TOTAL</b>	<b>2,654,893</b>	<b>2,857,840</b>	<b>202,947</b>	<b>17,810,872</b>	<b>17,865,956</b>	<b>55,084</b>

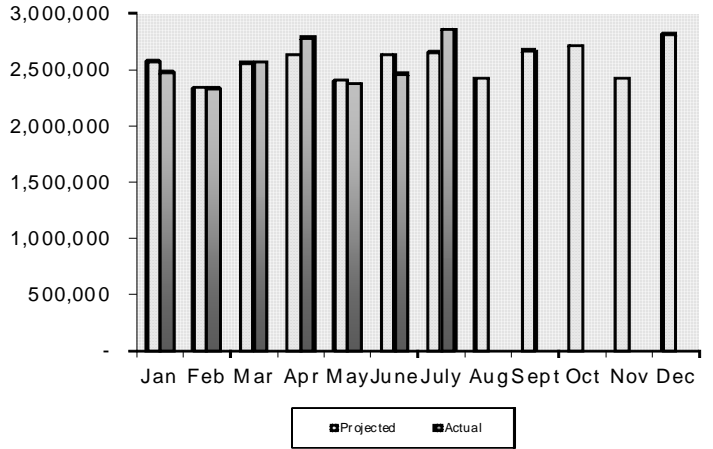
Projected columns are calculated by comparing actuals from the past five years on a monthly basis.  
The monthly averages are then applied to the 2012 budget.

\* Other revenues include various small fees, grants, and state funds.

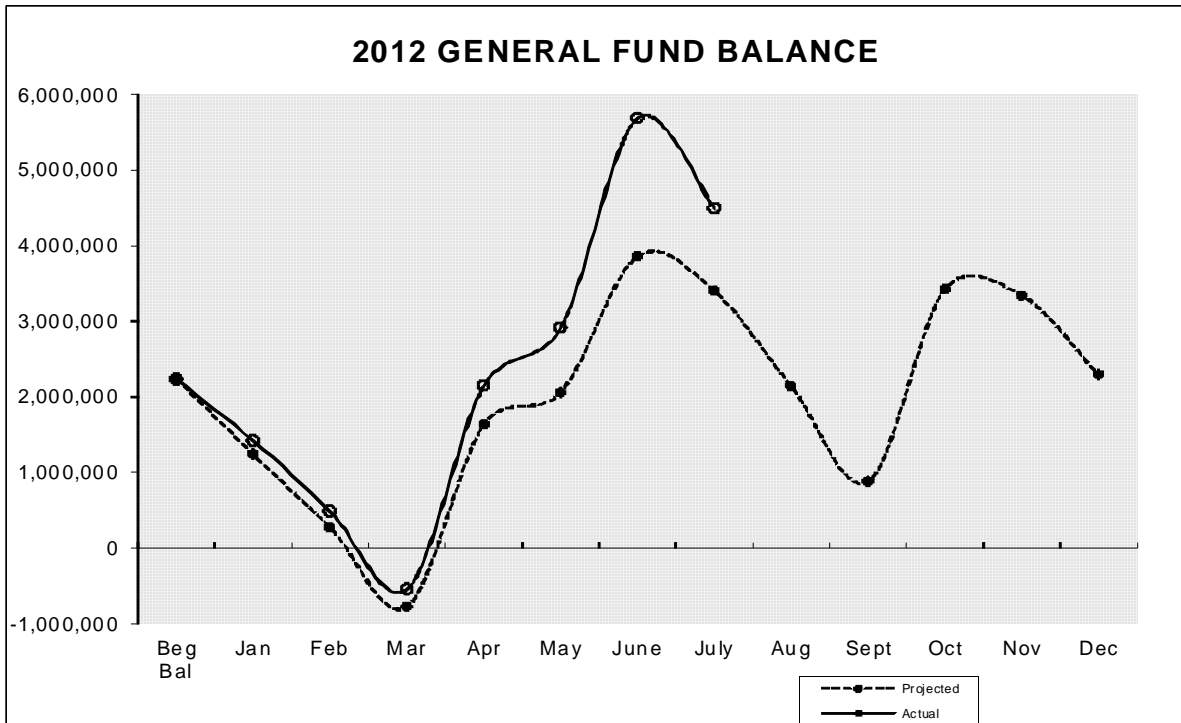
**MONTHLY GENERAL FUND REVENUES**



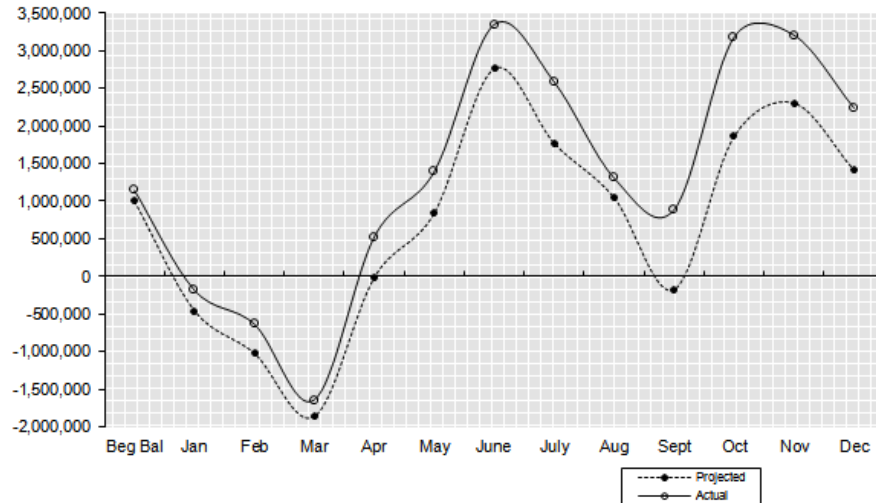
**MONTHLY GENERAL FUND EXPENDITURES**



**2012 GENERAL FUND BALANCE**



**2011 GENERAL FUND BALANCE**



# REVENUE

Through July 31, 2012

## GENERAL FUND

Dept # / Department	2012 Budget	2012 Actual	Balance	Percent Received
010 Reserve	0	215	(215)	100.0%
010 Assessor	40	71,587	(71,547)	178966.5%
015 Auditor	853,967	571,381	282,586	66.9%
020 Community Development	1,011,307	680,177	331,130	67.3%
040 Clerk	786,515	499,864	286,651	63.6%
045 Commissioners	9,153,453	7,207,807	1,945,646	78.7%
050 Coroner	15,000	9,835	5,165	65.6%
052 Information Technology	107,444	74,346	33,098	69.2%
055 Facilities Maintenance	634,294	393,422	240,872	62.0%
065 District Court	1,319,653	733,921	585,732	55.6%
066 District Court Probation	306,529	159,143	147,386	51.9%
075 Extension Services	56,385	27,480	28,905	48.7%
085 Juvenile Services	653,997	359,855	294,142	55.0%
105 Non-Departmental	623,440	401,599	221,841	64.4%
139 Child Support Enforcement	402,638	189,584	213,054	47.1%
140 Prosecuting Attorney	561,841	302,234	259,607	53.8%
145 Sheriff *	2,760,926	1,369,445	1,391,481	49.6%
155 Superior Court System	89,951	63,268	26,683	70.3%
165 Treasurer	1,093,218	1,022,450	70,768	93.5%
170 Property Taxes	10,572,216	5,990,768	4,581,448	56.7%
<b>TOTALS</b>	<b>31,002,814</b>	<b>20,128,380</b>	<b>10,874,434</b>	<b>64.9%</b>

## SPECIFIC FUNDS

Fund	2012 Budget	2012 Actual	Balance	Percent Received
110 County Roads	17,422,317	5,640,275	11,782,042	32.4%
119 Ohme Gardens	206,690	116,795	89,895	56.5%
125 Horticulture	121,758	64,956	56,802	53.3%
128 Noxious Weed	299,951	134,479	165,472	44.8%
180 Natural Resources	3,977,152	549,672	3,427,480	13.8%
405 Wenatchee River Park	242,250	172,293	69,957	71.1%
410 Expo Center	146,162	70,916	75,246	48.5%
411 Fair	173,500	46,005	127,495	26.5%
450 Regional Justice Center	8,179,838	4,811,351	3,368,487	58.8%
510 ER&R	2,855,949	1,146,216	1,709,733	40.1%
530 Motor Pool	946,724	773,294	173,430	81.7%

\* Includes additional revenue budget than what was originally budgeted

# EXPENDITURES

Through July 31, 2012

## GENERAL FUND

Dept # / Department	2012 Budget	Budget Adjs	2012 Actual	Balance	Percent Expended
010 Assessor	1,107,849	0	611,133	496,716	55.2%
015 Auditor	1,058,166	0	629,575	428,591	59.5%
016 Board of Equalization	7,045	0	2,977	4,068	42.3%
020 Community Development	1,476,894	0	759,694	717,200	51.4%
030 Civil Service Comm	11,097	0	3,601	7,496	32.5%
040 Clerk	1,014,020	0	582,977	431,043	57.5%
045 Commissioners	657,054	0	408,623	248,431	62.2%
050 Coroner	168,850	0	83,311	85,539	49.3%
052 Information Technology	600,422	0	341,276	259,146	56.8%
055 Facilities Maintenance	1,466,271	0	763,599	702,672	52.1%
065 District Court	1,131,163	7,708	625,368	513,503	54.9%
066 District Court Probation	405,227	0	229,778	175,449	56.7%
075 Extension Services	275,735	0	148,337	127,398	53.8%
085 Juvenile Services	2,598,999	0	1,474,117	1,124,883	56.7%
105 Non-Departmental	7,215,183	225,000	4,338,252	3,101,931	58.3%
139 Child Support Enforcement	354,044	0	176,602	177,442	49.9%
140 Prosecuting Attorney	1,792,224	0	1,026,879	765,345	57.3%
145 Sheriff	7,982,690	75,000	4,792,061	3,265,629	59.5%
155 Superior Court System	963,606	0	538,871	424,735	55.9%
165 Treasurer	577,206	0	328,924	248,282	57.0%
<b>TOTALS</b>	<b>30,863,745</b>	<b>307,708</b>	<b>17,865,956</b>	<b>13,305,497</b>	<b>57.3%</b>

## SPECIFIC FUNDS

Fund	2012 Budget	Budget Adjs	2012 Actual	Balance	Percent Expended
110 County Roads	17,803,477	0	5,687,313	12,116,164	31.9%
119 Ohme Gardens	227,142	0	117,202	109,940	51.6%
125 Horticulture	134,149	0	59,432	74,717	44.3%
128 Noxious Weed	311,633	0	155,019	156,614	49.7%
180 Natural Resources	3,999,676	0	640,928	3,358,748	16.0%
405 Wenatchee River Park	266,345	0	117,905	148,440	44.3%
410 Expo Center	136,308	0	84,510	51,798	62.0%
411 Fair	172,166	0	17,895	154,271	10.4%
450 Regional Justice Center	8,430,974	0	4,783,964	3,647,010	56.7%
510 ER&R	2,767,380	0	1,794,171	973,209	64.8%
530 Motor Pool	948,329	0	516,788	431,541	54.5%

## CASH & INVESTMENTS

<b>Fund</b>	<b>May 31, 2012 Cash &amp; Investments</b>	<b>June 30, 2012 Cash &amp; Investments</b>	<b>July 31, 2012 Cash &amp; Investments</b>
010 General	4,282,994	7,022,590	6,101,219
110 County Roads	5,830,905	5,618,863	4,481,253
119 Ohme Gardens	78,570	88,453	101,232
125 Horticulture Pest & Disease	54,505	47,758	35,997
128 Noxious Weed	49,805	31,383	12,251
140 Cashmere-Dryden Airport	32,360	32,956	32,703
180 Natural Resources	41,843	60,404	65,516
190 Criminal Justice Tax	1,039,368	1,090,285	1,144,590
301 REET 1	1,128,431	1,159,951	1,241,211
405 Wenatchee River Park	113,859	119,965	138,261
410 Expo Center	20,037	22,324	17,272
411 Fair	43,564	52,805	49,026
450 Regional Justice Center	972,031	944,667	883,829
510 ER&R	1,448,753	1,447,288	1,432,617
526 Health Insurance	246,835	239,604	226,469
530 Motor Pool	354,484	181,371	106,581
535 Unemployment Comp	92,587	105,995	118,781
540 Tort Claims & Insurance	283,567	257,381	549,979

## Accounts Receivable Outstanding Older than 30 days

### Auditor

010015-01252	5/19/2010	North Meridian Title & Escrow	5,512.00
010015-01256	6/2/2010	North Meridian Title & Escrow	5,216.00
010015-01266	6/21/2010	North Meridian Title & Escrow	5,265.00
010015-01270	7/1/2010	North Meridian Title & Escrow	7,446.00
010015-01281	7/19/2010	North Meridian Title & Escrow	3,019.00
010015-01599	6/1/2012	DSHS - MA	248.00

### Commissioners

010045-00084	6/29/2012	DSHS	214.13
--------------	-----------	------	--------

### Extension

010075-00178	6/7/2012	WA State University	9,986.91
010075-00179	6/7/2012	WA State University	18,691.07

### Sheriff

010145-01012	6/29/2012	WASPC	22,789.62
--------------	-----------	-------	-----------

### Superior Court

010155-00027	6/12/2012	AOC	5,646.87
--------------	-----------	-----	----------

### Public Works

110001-00523	6/25/2012	Selland Construction, Inc	75.00
401001-01965	5/25/2012	WA St Dept of Ecology	20,071.53
510001-00813	5/25/2012	Chelan County Coroner	157.57

### Noxious Weed

128001-00049	6/12/2012	WA St Dept of Ecology	86.00
--------------	-----------	-----------------------	-------

### Parent Education

136001-00022	3/6/2012	Council for Children/Families	34.97
--------------	----------	-------------------------------	-------

### Community Services & Housing

163001-00014	10/7/2010	DCTED - OCD - Housing Div	22,727.95
--------------	-----------	---------------------------	-----------

### Natural Resources

180001-00708	12/31/2011	WA St Dept of Ecology	9,191.01
180001-00713	12/31/2011	National Fish & Wildlife Found	2,022.12
180001-00714	12/31/2011	National Fish & Wildlife Found	18,641.10
180001-00720	12/31/2011	Emergency Management WA	1,136.31
180001-00731	5/1/2012	WA St Dept of Ecology	4,777.27
180001-00745	5/22/2012	National Fish & Wildlife Found	1,391.68

### Substance Abuse

193001-00167	05/23/2012	DSHS	58,481.00
193001-00169	06/14/2012	DSHS	7,226.00
193001-00170	06/27/2012	DSHS	1,631.02
193001-00172	06/27/2012	DSHS	709.05

### Regional Justice Center

450001-01865	05/24/2011	DHS/ICE	147.00
450001-01876	06/06/2011	DHS/ICE	367.50
450001-01909	07/05/2011	DHS/ICE	955.50
450001-01941	08/02/2011	DHS/ICE	294.00
450001-01944	08/02/2011	Score	2,730.00
450001-01973	09/05/2011	DHS/ICE	441.00
450001-02014	10/04/2011	DHS/ICE	220.50
450001-02052	11/02/2011	DHS/ICE	1,617.00
450001-02083	12/05/2011	DHS/ICE	588.00
450001-02114	12/31/2011	DHS/ICE	661.50
450001-02142	02/02/2012	DHS/ICE	882.00
450001-02197	04/09/2012	DHS/ICE	441.00
450001-02232	05/07/2012	DHS/ICE	441.00
450001-02246	05/21/2012	Department of Corrections	945.52
450001-02264	06/06/2012	DHS/ICE	441.00
450001-02279	06/21/2012	Department of Corrections	226.85
450001-02280	06/21/2012	Douglas County	14,832.37

### Health Insurance

526001-00003	12/31/2010	Daryl Mathena	241.03
526001-00004	3/8/2011	Daryl Mathena	458.78

If any of these outstanding receivables have been paid, will not be paid, or need adjustment,  
please contact the Chelan County Auditor's Accounting Office.